

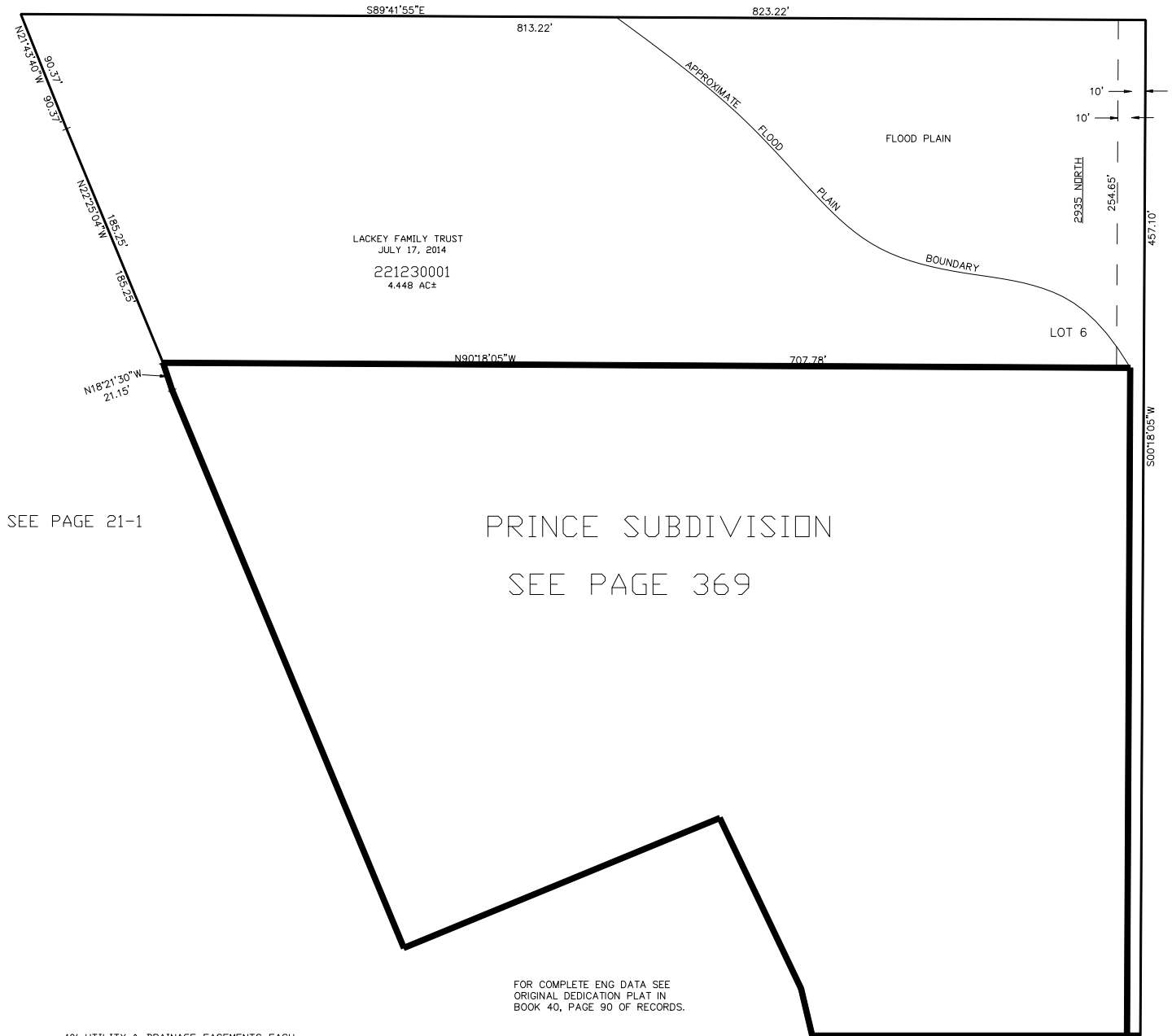
PART OF THE S.W. 1/4 OF SEC. 27, T.7N., R.1E., S.L.B. & M.
IRENE OGDEN SUBDIVISION NO. 4

IN WEBER COUNTY

SCALE 1" = 60'

TAXING UNIT: 28

SEE PAGE 21-1



SEE PAGE 21-1

PRINCE SUBDIVISION
SEE PAGE 369

FOR COMPLETE ENG DATA SEE
ORIGINAL DEDICATION PLAT IN
BOOK 40, PAGE 90 OF RECORDS.

SEE PAGE 21-1

10' UTILITY & DRAINAGE EASEMENTS EACH
SIDE OF PROPERTY LINES AS INDICATED
BY DASHED LINES EXCEPT AS OTHERWISE
SHOWN.

5100 EAST ST. PATIO SPRINGS ROAD

SEE PAGE 21-1